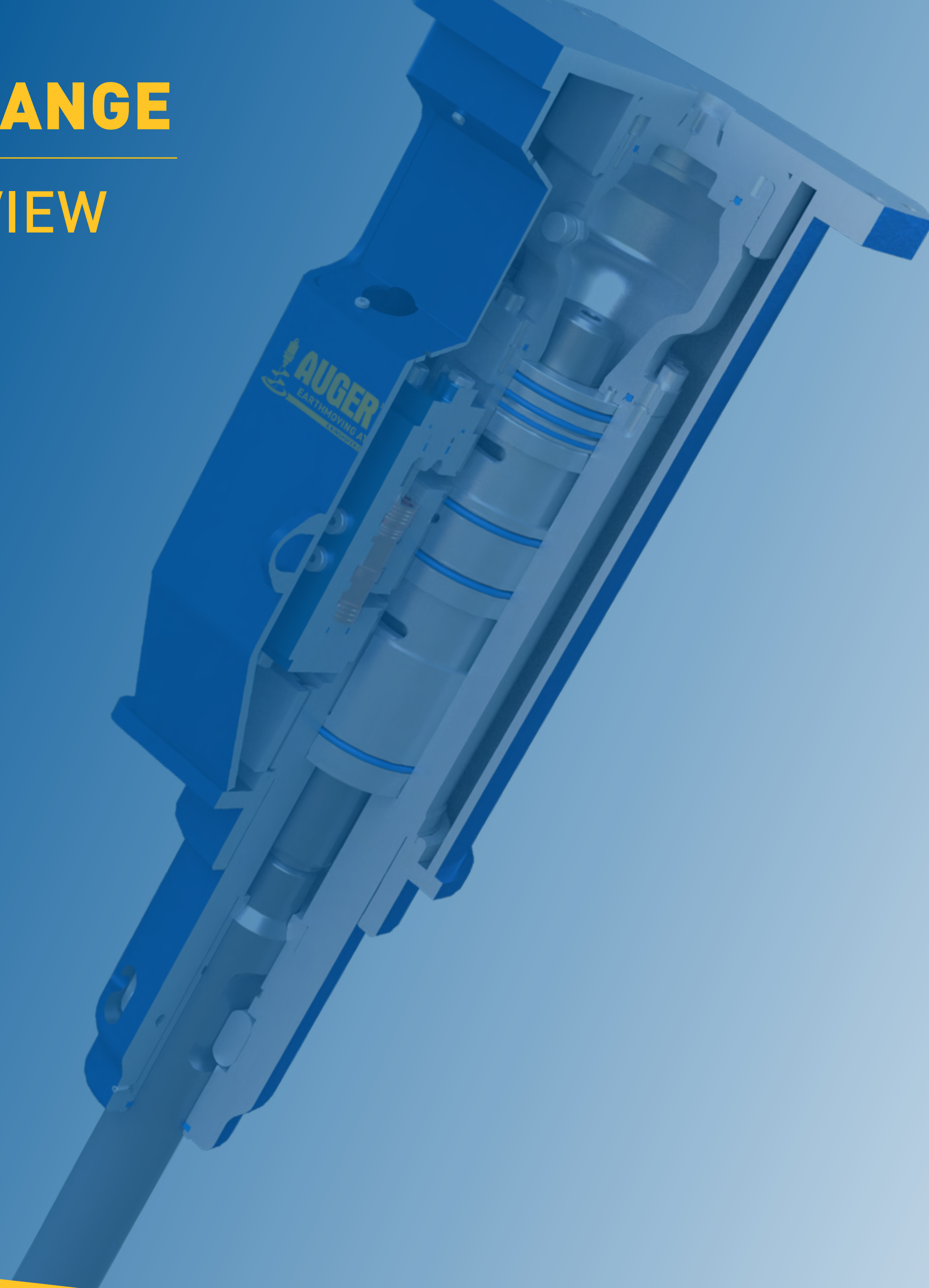


# SB HAMMER RANGE

## FEATURE OVERVIEW





---

**Coming to Australia this October**  
is Auger Torque's SB Range of Hydraulic  
Hammers, adding to Auger Torque's  
comprehensive range of high quality  
earthmoving attachments.

Initially Auger Torque will be releasing  
8 models in the SB range, catering to  
machines from 500kg all the way up to 12T  
operating weight with even more models on  
the horizon.

---



# SB HAMMER RANGE | FEATURES

## LONG-LASTING NITROGEN

New sealing compound consists of a three lip (Freudenberg) seal provides a high improvement in gas retention. Resulting in constant power and less downtime.

## INTERCHANGEABLE CYLINDER

The piston moves in a single cylinder which is easy to exchange and therefore reduces maintenance costs.

## ONLY TWO MOVING PARTS

Only the distributor and the piston are moving making the system extremely reliable.

Reduces downtime and maintenance costs.

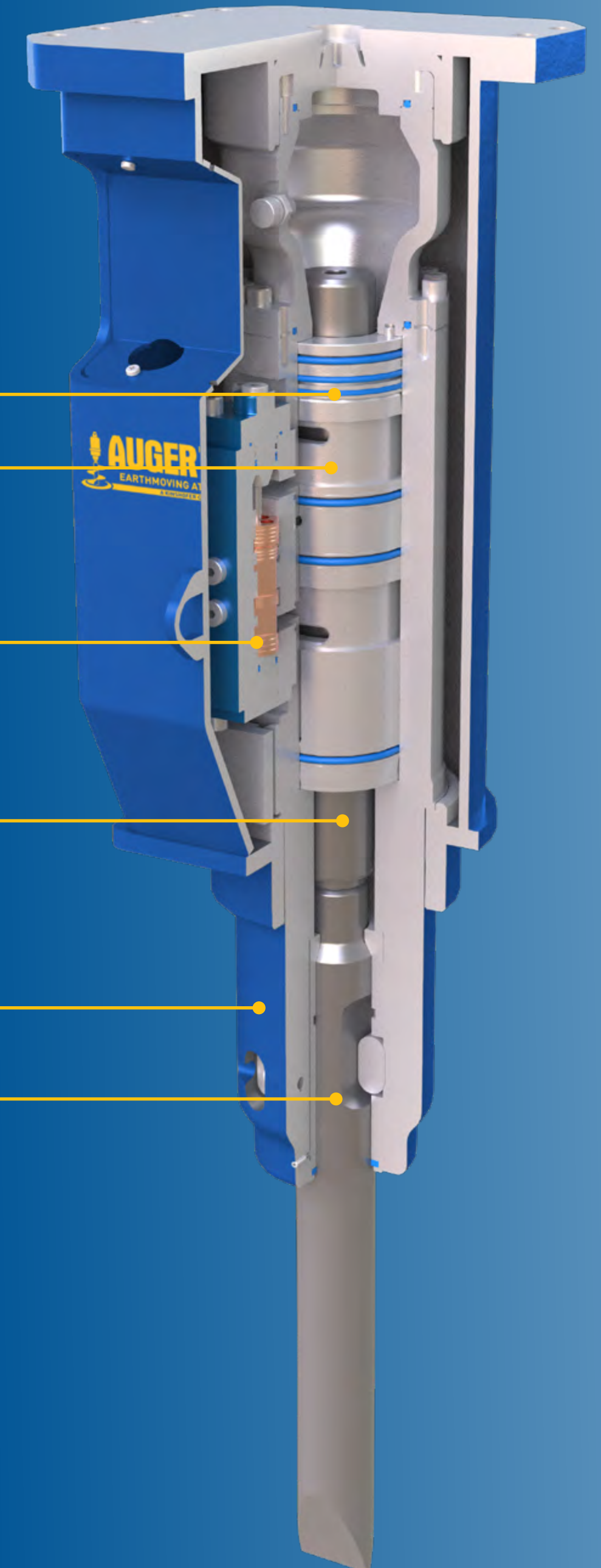
## MONO-BLOCK BODY

A single piece casing gives high resistance to leverage during operation.

No vulnerable tie rods are required **reducing maintenance costs.**

## DOUBLE RETAINER PIN

Ensures longer maintenance intervals for the entire locking system





# SB HAMMER RANGE | FEATURES

## SILENCED BODY

The closed box casing creates a breaker with low noise levels. Making longer working hours possible.

## PROTECTED HYDRAULIC CONNECTIONS

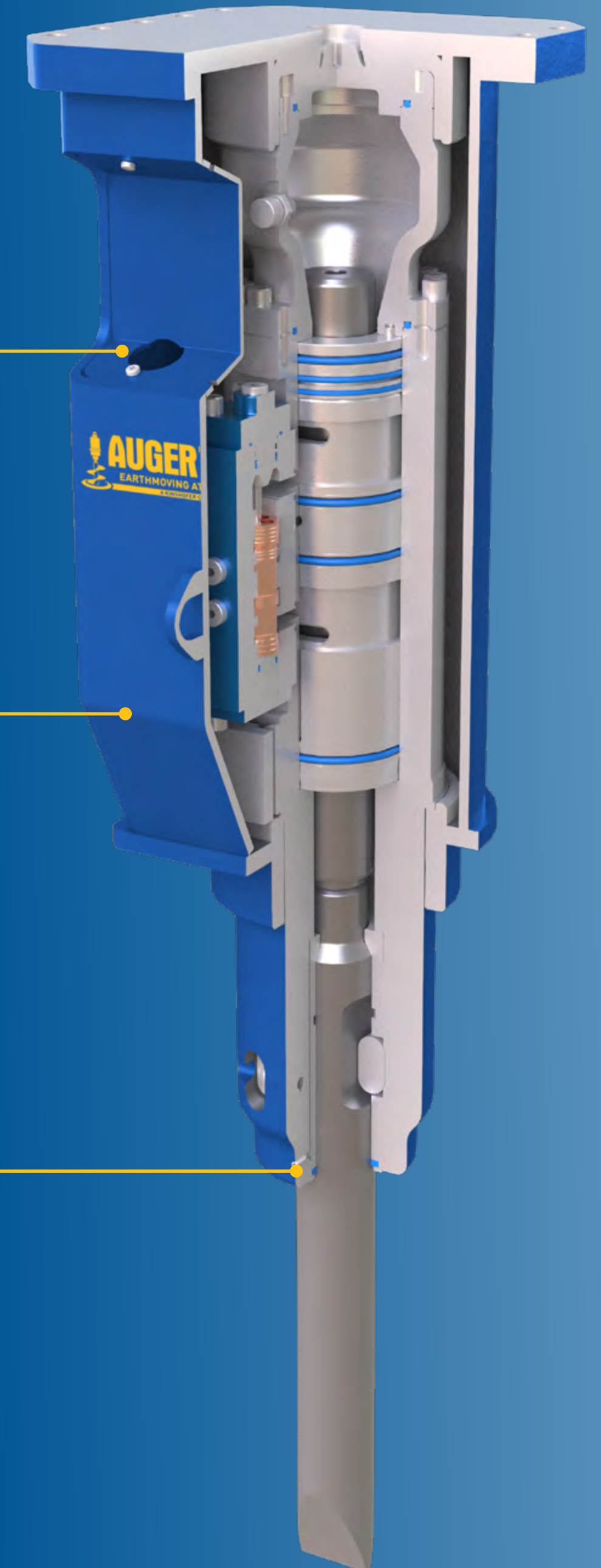
Hydraulic lines are completely protected by the case. Making it possible to work in tight access locations without risking hydraulic hose damage.

## INCREASE FLEET VERSATILITY

The SB Hammer Range can tolerate high back pressure values (25-30 bar) and has a wide oil flow calibration range. Easy install - Plug & Play

## DUST PROTECTION SEAL

A special seal protects the lower bushing from dust and dirt penetration For all models. This results in longer lifetime and less wear on lower bush.



# SB HAMMER RANGE | FEATURES

## VISIBILITY - SAFE WORKING ENVIRONMENT

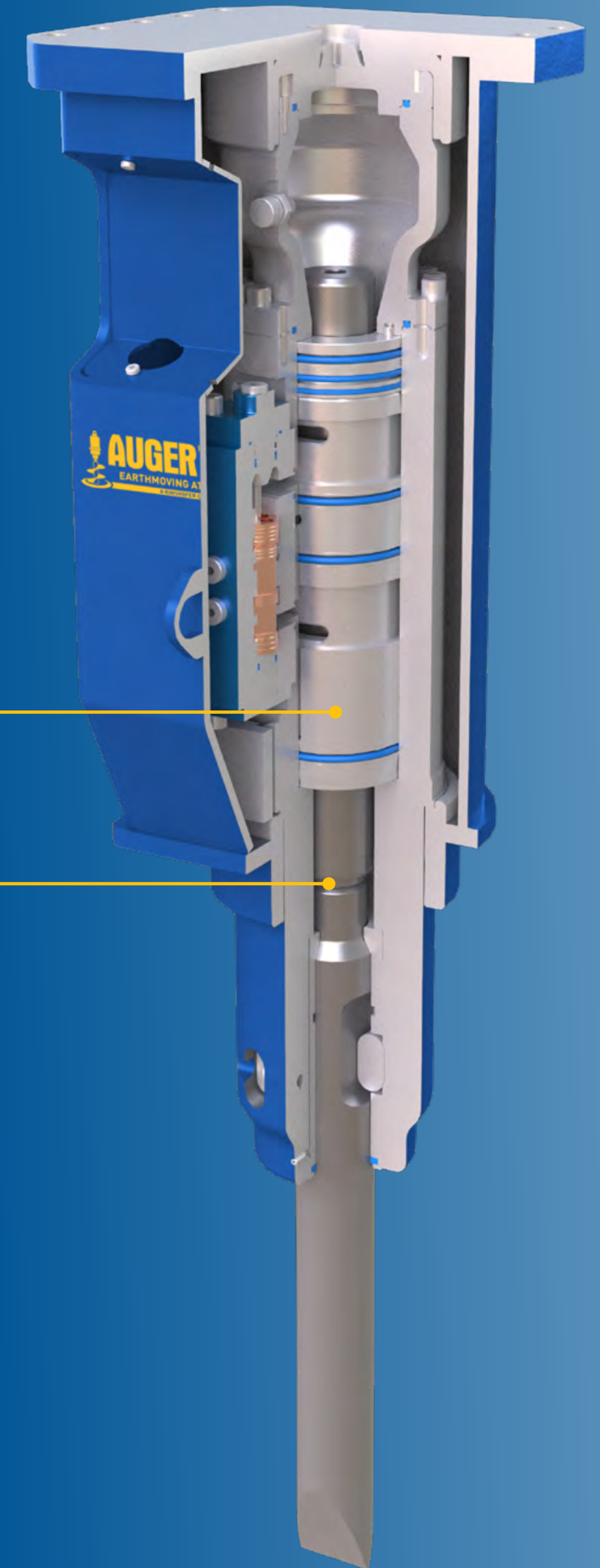
The tapered shape provides excellent visibility during operation, making it easy to work in tight access situations and narrow spaces.

## HYDRAULIC SYSTEM FOR BLANK FIRING

A regenerative oil circuit that avoids problems with blank firing when the tool is not in contact with the rock. **Saves maintenance costs.**

## UNIQUE GEOMETRY

The piston has a special, rounded geometry ensuring that no vulnerable edges hit the chisel keeping constant energy levels and reducing breakages in turn. **Reduces maintenance costs.**

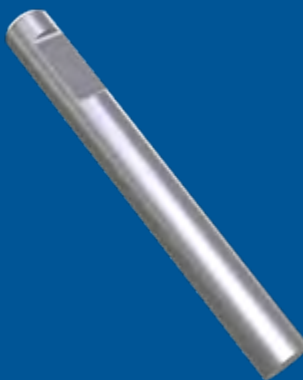


# SB HAMMER RANGE | CHISELS & TOOLS



## **MOIL POINT**

Suitable for concrete, medium-hard and non-layered rock.



## **BLUNT TOOL**

Suitable for reinforced concrete and highly compacted rock.



## **PYRAMID TOOL**

Suitable for reinforced concrete and highly compacted rock.



## **CHISEL TOOL**

Suitable for medium-hard and layered rock.



## **WOOD CUTTER**

Suitable for cutting all types of wood.



## **PILE DRIVER**

Suitable for planting wooden or concrete poles and posts.



## **ASPHALT CUTTER**

Suitable for cutting asphalt.



# SB HAMMER RANGE | TECHNICAL SPECIFICATIONS

Model		SB70	SB100	SB150	SB 200	SB250	SB300	SB400	SB500
Carrier Weight	t	0.5-2.5	1.2-3.5	1.5-4.5	2.5-6.5	3.0-8.0	4.5-9.0	6.0-11	8.0-12
	lb	11/55	26/77	33/99	55/14.3	66/17.6	99/19.8	132/242	176/242
Product weight	kg	70	100	145	190	250	320	430	540
	lb	155	220	320	419	551	706	948	1191
A	mm	583	666	666	869	869	904	1135	1135
	inch	22	26	26	34	34	35	44	44
B	mm	308	315	335	355	380	375	458	511
	inch	12	12	13	13	14	14	18	20
Chisel Diameter	mm	40	45	48	55	65	75	80	90
	inch	1.5	1.7	1.8	2.1	2.5	2.9	3.1	3.5
Oil Supply	lpm	13-20	15-30	18-40	25-55	30-60	50-70	75-90	85-110
	gpm	3.4-5.3	4-8	4.7-10.5	6.6-14.5	7.9-15.8	13.2-18.5	19.8-23.7	22.5-29
Oil Pressure	bar	100	110	110	130	140	160	150	150
	psi	1450	1595	1595	1885	2030	2320	2175	2175
Blows Per Minute	min	800-1750	800-2300	800-2000	900-1900	850-1800	600-1500	500-1300	600-1200
Energy Per Blow	J	280	400	580	750	950	1200	1700	2300
	ft-lb	206	295	430	555	700	885	1255	1700
Max. Back Pressure	bar	30	30	30	30	30	30	30	30
	psi	435	435	435	435	435	435	435	435
Inner Dia. Hose IN	inch	1/2	1/2	1/2	1/2	1/2	3/4	3/4	3/4
	inch	1/2	1/2	1/2	1/2	1/2	3/4	3/4	3/4
Inner Dia. Hose OUT	inch	1/2	1/2	1/2	1/2	1/2	3/4	3/4	3/4
	inch	1/2	1/2	1/2	1/2	1/2	3/4	3/4	3/4

# SB HAMMER RANGE | PRICING

## AUGER TORQUE SB RANGE

Whilst our SB range is the newcomer in the Australian market we are aiming to compete with high-end breakers closer to the entry-level market price.

Our hammers are gas type with high-end features such as the Freudenberg seal (up to 300% less nitrogen loss), high grade steel, mono-block design, no tie rods, silenced body and industry-leading warranty.



# SB HAMMER RANGE

Description	Part Number	RRP
SB70 - Hydraulic Hammer (0.5-2T)	BKR_0105F00A001	\$4,790.00
SB100 - Hydraulic Hammer (1.2-3.5T)	BKR_0206F00A001	\$5,322.00
SB150 - Hydraulic Hammer (1.5-4.5T)	BKR_0306F00A001	\$5,988.00
SB200 - Hydraulic Hammer (2.5-6.5T)	BKR_0406F00A001	\$7,318.00
SB250 - Hydraulic Hammer (3.0-8.0T)	BKR_0606F00A001	\$8,649.00
SB300 - Hydraulic Hammer (4.5-9.0T)	BKR_0816F00A001	\$9,979.00
SB400 - Hydraulic Hammer (6.0-11.0T)	BKR_1016F00A001	\$12,773.00
SB500 - Hydraulic Hammer (8.0-12.0T)	BKR_1216F00A001	\$14,636.00

All pricing and information subject to change without prior notice. **All pricing is exclusive of GST.**



# GLOBAL EXPERTISE **KINSHOFER**



## The Kinshofer Group of Companies

As a collective group of specialist attachment companies, the Kinshofer Group has one of the most diverse specialist product offerings available anywhere around the world today. Our global expertise is what sets our closely-knit family of manufacturers apart from the rest.

We are large enough together to provide you with unrivalled product know-how while at the same time being nimble enough to discuss your unique requirements in an open and personal way.

13 22 12

Proudly Distributed By **LOCAL KNOW-HOW**

Call us today on our new National number for your nearest distributor or dealer.

