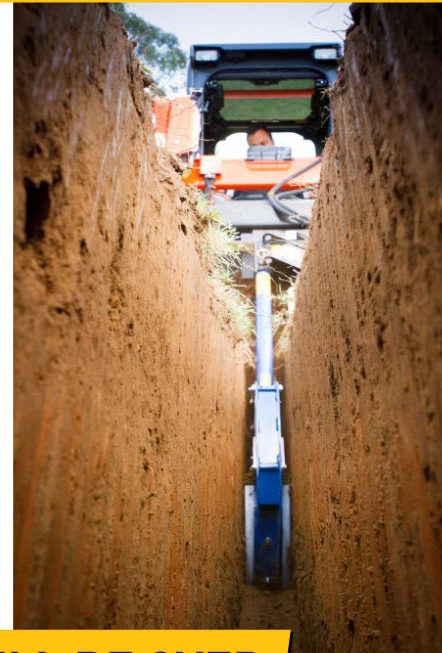




TRENCHERS



THE DAYS OF YOUR TRENCHING BUCKET MAY WELL BE OVER

The laborious task of digging a trench has been transformed since the advent of the Trencher Attachment. Auger Torque's range of Trenchers cover depths up to 1.5 meters and widths up to 350mm, whilst spoil is piled neatly to one side of the trench by the integral auger.

HIGH QUALITY HYDRAULIC MOTORS

Auger Torque's huge buying power means we work closely with high quality suppliers to develop the most reliable attachments available on the market today.

EPICYCLIC GEARBOX

Torque is amplified by using the unique Auger Torque planetary gearbox. This system allows the motors output torque to be multiplied with extreme efficiency as well as ensuring the durability and reliability you need.

ADJUSTABLE DEPTH SKID

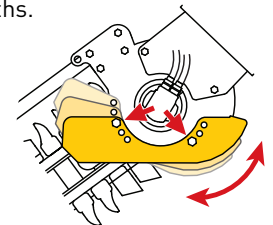
A great feature that will make your job much easier is the precision depth control skid, which enables the operator to set the machine at up to three different trench depths.

QUICK CHAIN ADJUSTMENT

A convenient feature making chain adjustment quick and easy.

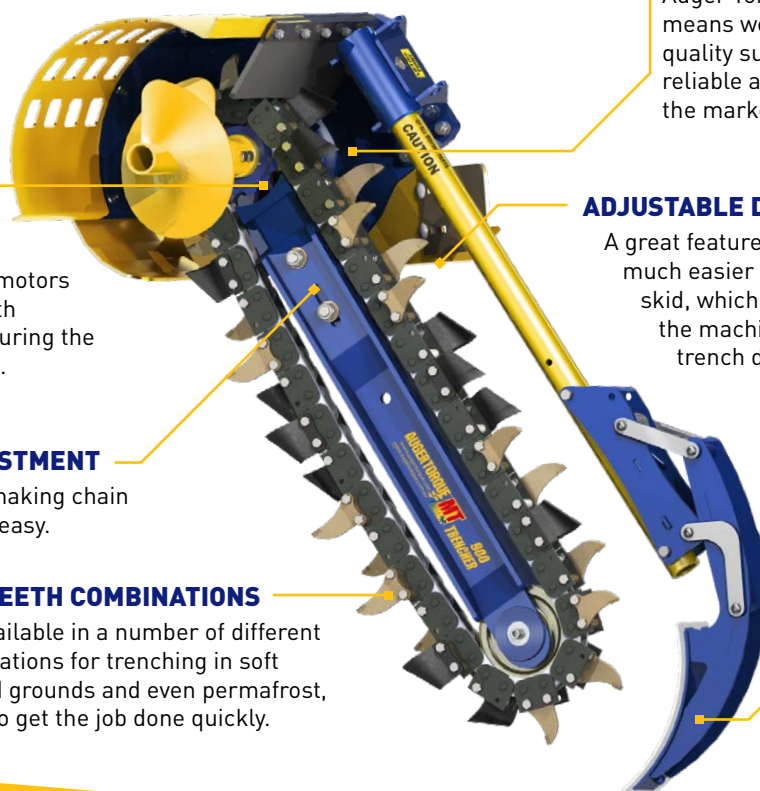
MULTIPLE TEETH COMBINATIONS

Chains are available in a number of different teeth configurations for trenching in soft ground, mixed grounds and even permafrost, allowing you to get the job done quickly.



TRENCH CLEANER

Built-in trench cleaner to restrict loose spoil travelling along the new trench base.



www.augertorque.com

CALL 13 22 12 | EMAIL sales@augertorque.com.au

OR CONTACT YOUR NEAREST DEALER

TRENCHER ATTACHMENTS

Features

- ▶ Adjustable depth settings from 300mm to 1.5m*
- ▶ Chain width options from 100mm to 350mm*
- ▶ Multiple teeth combinations to suit ground type
- ▶ Quick chain adjustment
- ▶ Various hitch formats to suit parent machine
- ▶ High quality motor and gearbox
- ▶ Hoses included

*model dependent

Applications

- ▶ Ground source heat pumps
- ▶ Drainage and irrigation
- ▶ Gas and water pipework
- ▶ Electrical and fibre optic cables
- ▶ Large bore gas and water pipework
- ▶ Hedge and tree planting

Specifications

| Model | | MT600 MT24 | MT900 MT36 | XHD900 XHD36 | XHD1200 XHD48 | XHD1500 XHD60 |
|---------------------|------|---------------|---------------|-----------------|------------------|------------------|
| Carrier Weight | t | 2.5-4.5 | 3.0-5.0 | 5.0-10.0 | 5.0-10.0 | 5.0-10.0 |
| | lb | 55/99 | 66/111 | 111/220 | 111/220 | 111/220 |
| Unit Width | mm | 850 | 850 | 1018 | 1018 | 1018 |
| | inch | 34 | 34 | 40 | 40 | 40 |
| Unit Height | mm | 736 | 736 | 808 | 808 | 808 |
| | inch | 29 | 29 | 32 | 32 | 32 |
| Unit Length | mm | 1465 | 1800 | 1962 | 2262 | 2562 |
| | inch | 58 | 71 | 77 | 89 | 101 |
| Oil Pressure Range | bar | 160-240 | 180-240 | 180-240 | 180-240 | 180-240 |
| | psi | 2320-3000 | 2610-3481 | 2610-3481 | 2610-3481 | 2610-3481 |
| Oil Flow Range | lpm | 35-65 | 45-80 | 60-95 | 70-110 | 80-115 |
| | gpm | 9-17 | 12-21 | 16-25 | 18-30 | 22-35 |
| Cutting Width Range | mm | 100-300 | 100-300 | 150-350 | 150-350 | 150-200 |
| | inch | 4-12 | 4-12 | 6-14 | 6-12 | 6-8 |

Chain Options



EARTH
Soft ground



COMBI
Mixed terrain



TUNGSTEN
Hard ground / Frozen

Mounting Hitch Options

Three versions of the mounting hitch are available:

SIDE SHIFT FRAME

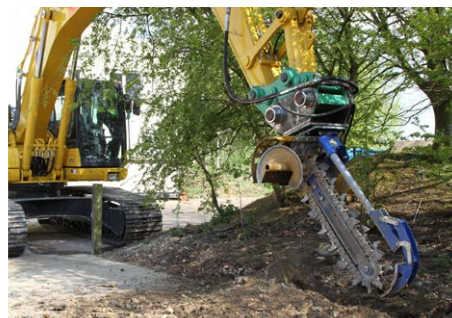
For Skidsteer Loaders.

MINI LOADER FRAME

For Mini Loaders.

EXCAVATOR HITCH

Available in several pin sizes to fit most machines.



Part of the Auger Torque Earthmoving range

EARTH DRILLS | AUGERS & WEAR PARTS | MAST-BASED DRILLING RIG | TRENCHERS | HAMMERS

www.augertorque.com

CALL 13 22 12 | EMAIL sales@augertorque.com.au

OR CONTACT YOUR NEAREST DEALER